

CELL SIGNALLING 1
ANDREW QUEST
 8:00 - 10:00

Introduction ACCDiS. Cell intrinsic and extrinsic mechanisms in Caveolin-1 enhanced metastasis
Andrew Quest - U.Chile

Early endosomes, cell migration and the epithelial to mesenchymal transition: novel connections and their contribution to tumor progression
Vicente Torres - U.Chile

Signaling mechanisms regulated by S-nitrosylation in the endothelium and its contribution to extravasation and metastasis
Fabiola Sanchez - U.ACh

SALL2, a double agent transcription factor in cancer
Roxana Pincheira - U. Concepción

Nuak1 kinase: metabolic reprogramming and driving cancer resistance to therapy?
Ariel Castro - U. Concepción

Roundtable Discussion - 15 min

Video

Plenary Conference: Genetic insights into familial cancers
Luis Carvajal-Carmona (UC Davis, USA)

TRANSLATIONAL RESEARCH
GARETH OWEN
 11:00 - 13:00

A clinical platform for cancer research
Gareth Owen - PUC

Functional genomics in cancer
Ricardo Armisen - UDD

Epigenomic landscapes in gastrointestinal tumors
Alejandro Corvalan - PUC

Exosomal lactadherin from breast cancer cells promotes invasion and metastasis
Lorena Lobos - UDD

Roundtable Discussion - 20 min

ACCDiS
 ADVANCED CENTER FOR CHRONIC DISEASES

**CANCER
 SPRING
 SYMPOSIUM**

DATE: 3 NOV



ZOOM



LIVE

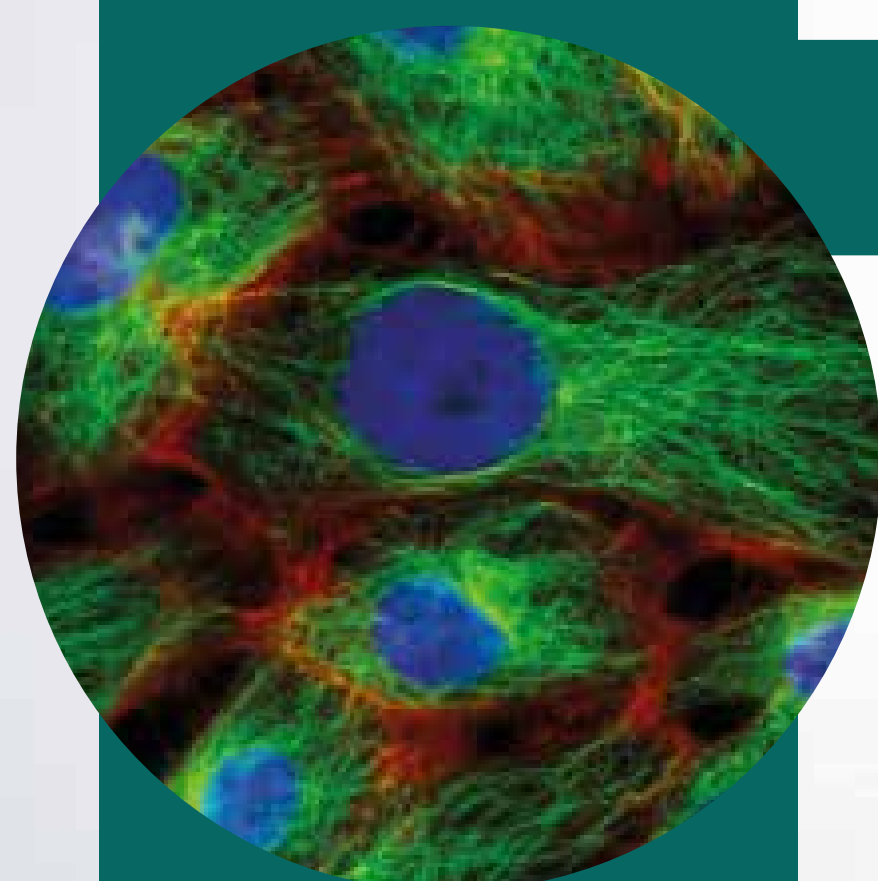


YOUTUBE

ENROLLMENT AND LIVE STREAMING

@ACCDiS





CELL SIGNALLING 2 LISETTE LEYTON 8:00 - 10:00

Thy-1/CD90-induced metastatic breast cancer cell migration is b3-integrin-dependent
Lisette Leyton - U.Chile

Biological role of fructose in prostate cancer
Alejandro Godoy - U. San Sebastián & Roswell Park Comprehensive Cancer Center, USA

Chemo-EVs and its contribution in tumor progression
Manuel Varas - U. San Sebastián

H. pylori urease is a ligand for Toll-like receptor 2 / P. gingivalis and H. pylori in oral cancer
Manuel Valenzuela - U.Central
Denisse Bravo - U.Chile

Roundtable Discussion - 15 min

Video

Plenary Conference: TFF1, A gatekeeper in gastric cancer.
Wael El-Rifai (SCCC, U Miami, USA)

CLINICAL RESEARCH MARCELA HERMOSO 11:00 - 13:00

How the alarmin IL-33 axis contributes to inflammation and cancer
Marcela Hermoso - U.Chile

Pragmatic trials in the Precision Medicine era: Clinical trialist perspective
Sebastian Mondaca - PUC

A genetic classifier for the prediction of thyroid nodules – a biomarker development model
Hernan Gonzalez - PUC

Targeting antisense mitochondrial non-coding RNAs for cancer therapy: lessons from preclinical trials
Veronica Burzio - Fundación Ciencia y Vida

Roundtable Discussion - 20 min

ACCDiS
ADVANCED CENTER FOR CHRONIC DISEASES

**CANCER
SPRING
SYMPOSIUM**

DATE: 10 NOV



ZOOM



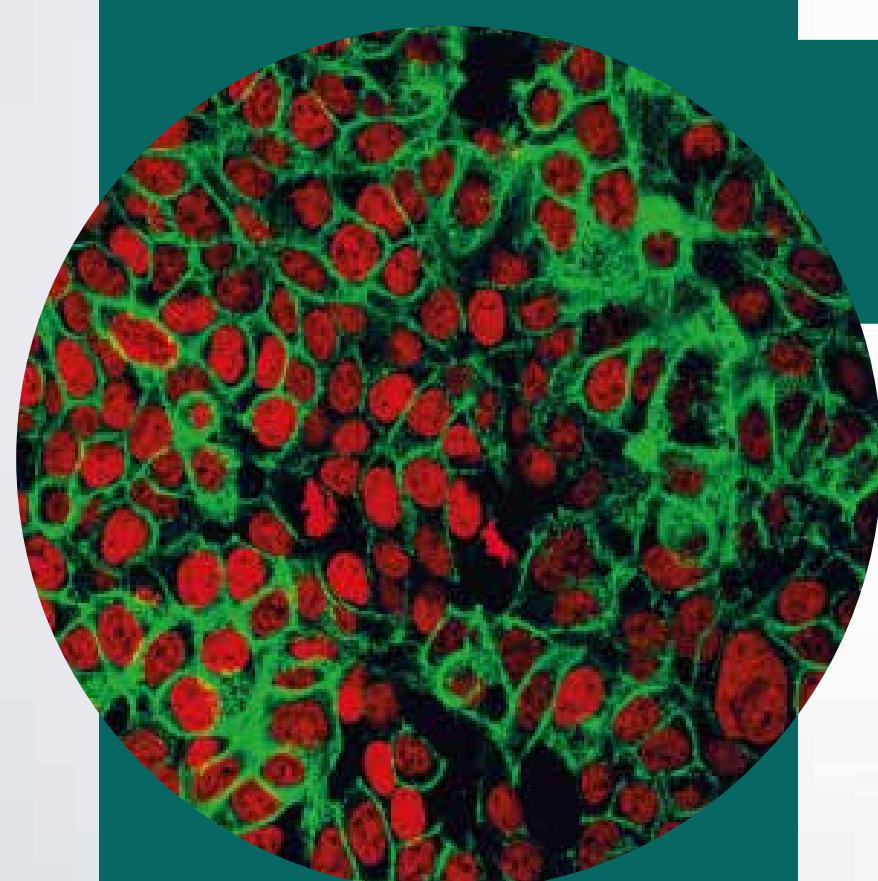
LIVE



YOUTUBE

**ENROLLMENT AND LIVE STREAMING
@ACCDIS**





SYSTEMS BIOLOGY & IMMUNO-ONCOLOGY ALEJANDRO CORVALAN

8:00 - 10:00

Opportunities and Challenges in Big Omics Data Analytics in cancer

Elmer Fernández - U.Catolica of Cordoba - Argentina

Integrative bioinformatics and systems biology of long non-coding RNAs in cancer

Vinicius Maracaja - U.Chile

Unveiling the role of tissue-resident memory T cells in human solid cancers

Alvaro Lladser - Fundación Ciencia y Vida

Spatially Resolved and Quantitative Analysis Immunotherapies in Cancer

Franz Villarroel-Espindola - FALP

Roundtable Discussion - 20 min

Video

Plenary Conference: Basic and translational aspects of signaling by protein kinases and small

GTPases - Marcelo Kazanietz (U Penn, USA)

NANOTECHNOLOGY MARCELO KOGAN

11:00 - 13:00

Nanoparticles for theranostics of cancer
Marcelo Kogan - U.Chile

Phase 2 clinical trial of an innovative oncotherapeutic nanomedicine drug candidate in epithelial tumors

Wagner J. Favaro - U.Campinas, Brazil

Nanomedicine applied in preclinical and clinical animal models

Nelson Duran - U.Campinas, Brazil

Nano meets bio- spheroid culture on Fractals

Silke Krol - Inst. Testa, Italy

Roundtable Discussion - 20 min

Closing Ceremony: Meeting Highlights - Andrew Quest and Alejandro Corvalan
13.00 - 13.30

DATE: 17 NOV



ENROLLMENT AND LIVE STREAMING
@ACCDIS

ACCDiS
ADVANCED CENTER FOR CHRONIC DISEASES

CANCER
SPRING
SYMPOSIUM

